

# Staff Presentation – PURPA 111d HCE Programs Overview

June 21, 2023



Your community. Your co-op. Your choice.





# Thank You!

The Infrastructure Investment and Jobs Act of 2021 created two new federal standards related to the promotion of demand-response and electric vehicle adoption that must be considered by utilities.

HCE is committed to implementing demand response and electric vehicle programs for the benefits of all members.

Thank you for participating in the review of HCE's current offerings.



# Topics for Today's Presentation

- Demand Response Rates
- Buildings Programs/Rebates
- Power+
- Electric Transportation Programs

# Demand Response Rates



Your community. Your co-op. Your choice.





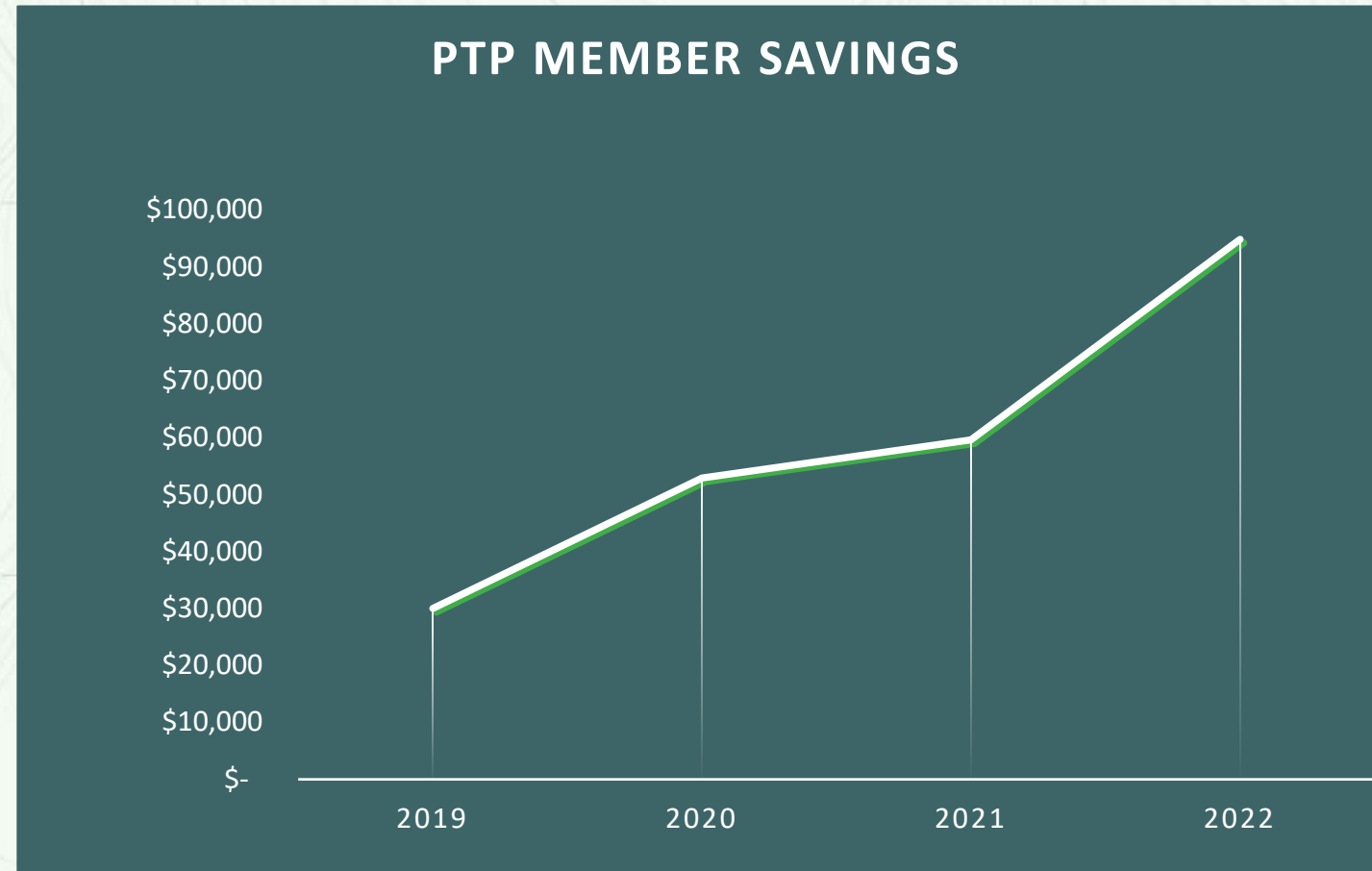
# Peak Time Payback (PTP)

- PTP rewards enrolled members who reduce usage during forecasted high demand times.
  - PTP is available to all HCE members with a smart meter excluding Power+ program participants.
  - Event alerts are received a day in advance.
  - 60 PTP events called in 2022 mostly between the hours of 4-9PM on a weekday.
- How much can you save?
  - Critical events pay \$1.00/kWh reduced compared to your baseline.
  - High events pay \$0.50/kWh reduced compared to your baseline.
- A baseline calculation of typical usage during an event is compared to the actual usage during the Peak Time Payback event.
  - There is no penalty for non-response.



# Peak Time Payback

- Tariff became available in July 2019.
- Total member savings to date \$276,000.
- Peak Reduction of 10,600 kW in 2022 leading to a savings of \$180,000.





# Time of Use (TOU)

- Time of Use Rate is offered to residential and commercial members with a smart meter.
  - Voluntary rate.
  - Power+ program participants are excluded.
- Energy charge is calculated based on Off-Peak and On-Peak usage. On-Peak hours are 7 days a week from 4-9PM.
  - Off-Peak- \$0.06/kWh
  - On-Peak- \$0.24/kWh
  - No demand charge.
- Members on TOU have the advantage of using electricity at lower Off-Peak rates.
- 91 accounts currently enrolled in TOU.

# Buildings Programs/Rebates



Your community. Your co-op. Your choice.





# Demand-Response Related Rebates

## QUALIFYING EQUIPMENT FOR DEMAND RESPONSE:

- Cold Climate Heat Pumps(Air, Water or Ground Source)
- Heat Pump (Hybrid) Hot Water Heater
- Lighting Controls
- Smart(Wi-Fi Enables) Thermostats
- VRF Systems (Commerical/Multi-Family)

## REBATE AMOUNT:

- Residential - 25% of project cost up to \$5000/year/account
- Commercial – 25% of project cost up to \$7500/project max



# Building Program Opportunities

## PROGRAMS UNDER CONSIDERATION:

- Expanded On-Bill Financing
- Hot Water Heater Program
- Residential Flexible Load Management (PTP +)
- Commercial Demand Response
- Smart Panel Rebates



# Power+



Your community. Your co-op. Your choice.



## Power+

- 3MW of Tesla Powerwall 2's
- \$0 down, 0% on-bill repayment
- \$2,500 rebate per Powerwall
- \$51.50/Powerwall bill credit

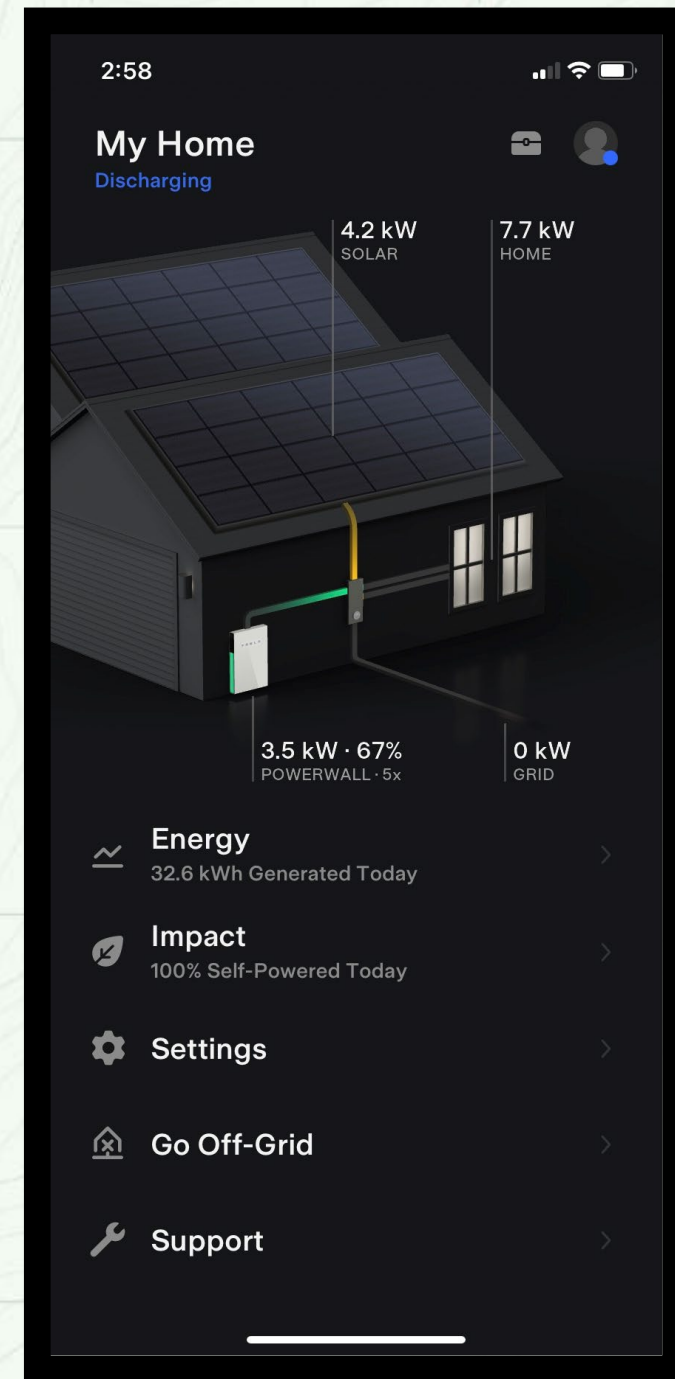






## Power+

- HCE dispatches Powerwalls up to 10 times/month
- Save on our wholesale power supply
- Pass those savings on to our members





# Power+

**Total out of pocket after  
ten years: \$10,100.4**

## Power+ Member Payment Summary

Battery:	Tesla Powerwall 2
Quantity:	5
Installed Cost:	\$53,500.00
HCE Rebate:	\$12,500.00
Monthly DERSA Payment	\$341.67
Monthly DF Credit	<u>(\$257.50)</u>
Monthly Net Cost (Credit)*	<b>\$ 84.17</b>



# Electric Transportation (ET) Programs

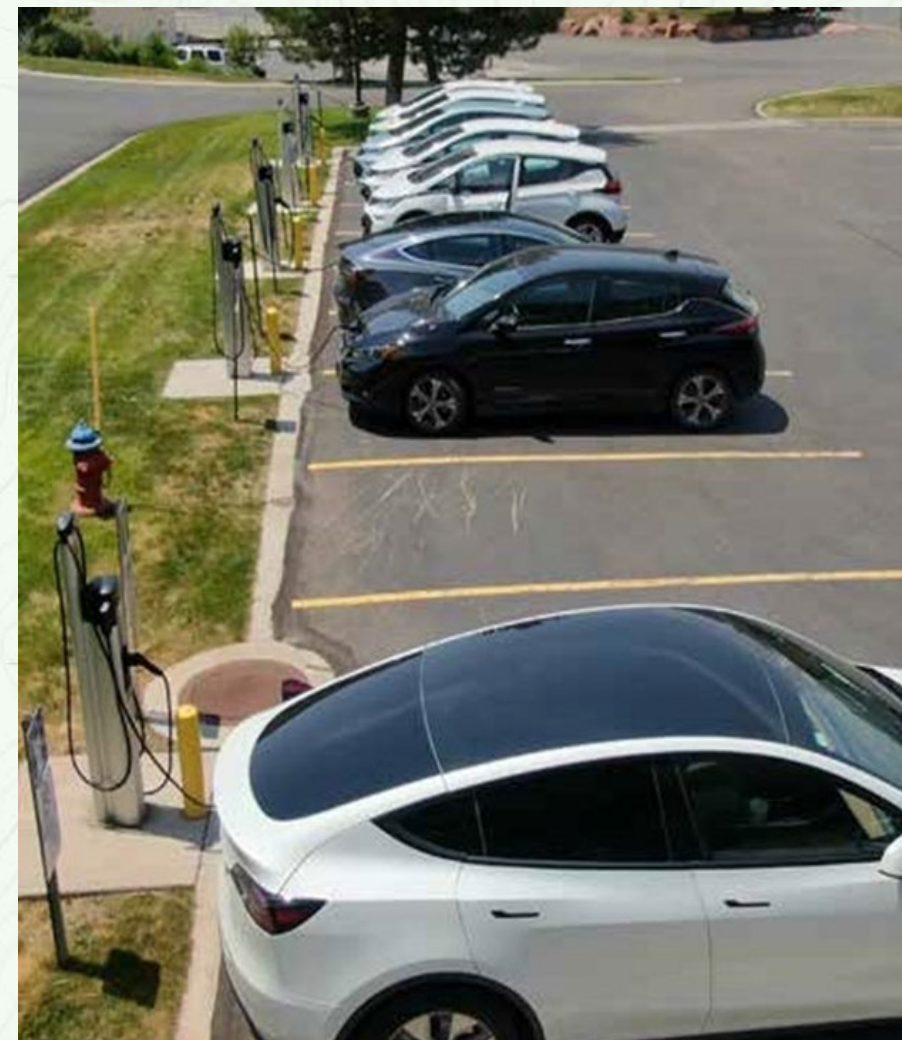


Your community. Your co-op. Your choice.



# Charge @ Home / Charge @ Work

- Goal of enabling EV adoption with easy streamlined charger procurement & installation process
- 600+ Chargers distributed to Members
- Members have the ability to spread costs of installation up to 36 months
- HCE gets data on charging behavior & load profiles and ability to curtail charging power levels during time of peak demand







# Community Fast-Charging

- Initial Goal of at least 1 x publicly accessible DCFC in each HCE community
- Town of Marble & Town of Snowmass Village are only municipalities still without DCFC
- HCE provided in-kind contributions via engineering support and electrical upgrade costs to support DCFC site-hosts pursue & complete projects
- DCFCs also take advantage of HCE's ToD Rate







# Mass Transit

- Goal of enabling transit providers & schools to electrify
- 22 Battery Electric Buses in HCE Service Territory
  - 8 with RFTA
  - 4 with Town of Vail
  - 3 with ECO Transit (Eagle County)
  - 2 with Town of Avon
  - 4 with Aspen School District
  - 1 with Aspen Country Day School
- HCE's ToD Rate provides significant savings by charging during times where renewable generation overnight
  - \$0.06 per kWh Off-Peak
  - \$0.24 per kWh On-Peak
  - No Demand Charge







# ET Planning

- Planning to publish updated HCE ET Plan in Q3 2023
- Highlights include ;
  - Multi-Family Housing dedicated support
  - V2X / Bi-Directional Charging Pilot with / Aspen School District
  - Commercial & Fleet Advisory Services
  - Brand-agnostic Managed Charging program eligibility via
    - Additional EVSE Partnerships
    - EV Telematics
    - EV Detection, Identification, & Enrollment using AMI Disaggregation







# Thank You!

We appreciate the time members have taken to review these programs and offer their comments.