



Your community.
Your co-op.
Your choice.

Power Supply

2023 Residential & Commercial Rebates

FOR ENERGY EFFICIENCY & ELECTRIFICATION PROJECTS

EFFECTIVE JANUARY 1, 2023

Rebates are available to Holy Cross Energy (HCE) members in good standing. Equipment must be installed in HCE service territory and be in working order. See full list of rules at the end of the document.

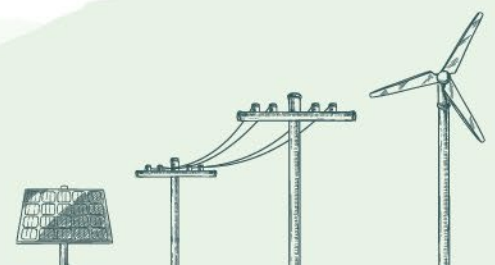
Invoices must be dated within 90 days of applying for rebate.

Questions: rebates@holycross.com or 970.947.5473

| Type of Building -- Retrofits | Rebate Amount | Maximum Rebates |
|--|--|--|
| Residential | 25% of total project cost for any qualifying project | \$5,000/year per account \$15,000/year per member |
| Commercial and Multifamily (4 or more units) | 25% of total project cost for any qualifying project | \$7,500 per project max \$30,000/year per member |

Cold Climate Air, Water, or Ground Source Heat Pump (heating and cooling)

- Ducted heat pump
 - Heating Seasonal Performance Factor (HSPF2) of 8.1+
 - Coefficient of Performance (COP) @ 5° of 1.75+
- Ductless mini-split heat pump
 - Heating Seasonal Performance Factor (HSPF2) of 9.5+
 - Coefficient of Performance (COP) @ 5° of 1.75+
- Outside unit must be elevated at least 12 inches off the ground to defrost properly
- Garfield County (Climate Zone 5)
 - Heat pump rated to 5°F minimum
- Eagle County (Climate Zone 6), Gunnison and Pitkin Counties (Climate Zone 7)
 - Heat pump rated to -5°F or colder minimum
- Recommended: load calculation to right size heat pump system and derate for high elevation
- Learn more about heat pumps:
 - <https://loveelectric.org/heating-cooling/>





Your community.
Your co-op.
Your choice.

Power Supply

Building Envelope: Air Sealing

- Electrically heated buildings only
- Pre- and post-blower door assessment required – sign up at: <https://energysmartcolorado.org/for-your-home/>
- Air leakage must be reduced by 10% or more as measured in CFM50 by blower door test

Building Envelope: Insulation

- Electrically heated buildings only
- Air sealing must be completed prior to adding insulation unless Natural Air Changes per Hour (NACH) is 0.35 or lower.
- Pre- and post-blower door assessment required – sign up at: <https://energysmartcolorado.org/for-your-home/>
- Insulation project must meet 2018 International Energy Conservation Code (IEEC) requirements
- Attic, crawlspace, and exterior walls qualify for rebate

Building Envelope: Multifamily (4 or more units)

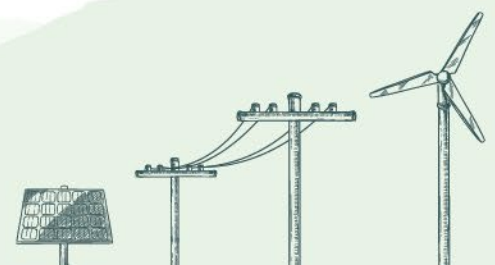
- Electrically heated complexes only
- Entire building must be air sealed and/or insulated
- Pre- and post-blower door assessment required on one unit per building – sign up at: <https://energysmartcolorado.org/for-your-home/>
- Air leakage must be reduced by 10% or more as measured in CFM50 by blower door test
- Insulation project must meet 2018 IEEC requirements
- Attic, crawlspace, and exterior walls qualify for rebate

Electronically Commutated Motor (ECM) or Variable Speed Motor

- Replace any single speed motor with EC/variable speed motor
- Applications include heating, cooling, ventilation, and refrigeration

Heat Pump Dryer

- Energy-Star certified dryer with heat pump technology
 - <https://www.energystar.gov/productfinder/product/certified-clothes-dryers/results>
- Learn more about heat dryers:
 - https://www.energystar.gov/products/heat_pump_dryer





Your community.
Your co-op.
Your choice.

Power Supply

Heat Pump (Hybrid) Water Heater

- Energy-Star certified with heat pump technology
 - <https://www.energystar.gov/productfinder/product/certified-water-heaters/results>
- Learn more about heat pump water heaters:
 - <https://loveelectric.org/hot-water/>

Heat Tape Timer

- Timer must be hardwired
- Recommended: run heat tape during daylight hours
 - <https://www.holycross.com/wp-content/uploads/2020/07/Heat-Tape-Basics-with-Rates-from-7-1-1911.2.2020.pdf>

Induction Cooktop/Range

- Induction cooktop or range
- Learn more about induction cooking:
 - <https://loveelectric.org/cooking/>

LED Lighting – Commercial or Multifamily Only

- Replace non-LED bulbs with qualifying LED fixtures or bulbs
- Minimum of 30% wattage reduction required
- All fixtures or LED bulbs must be Energy Star rated or Design Lights Consortium (DLC) certified

Lighting Controls - Commercial or Multifamily Only

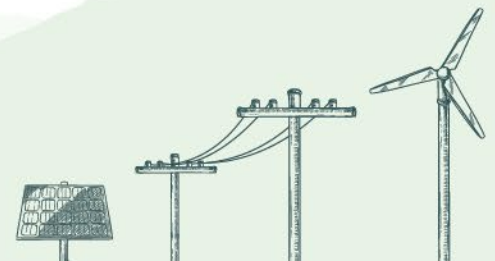
- Networked lighting controls (NLC) with wireless networked integrated sensors only
- Control schedule submitted with rebate application

Pool & Spa Pumps

- Replace single speed pump with variable speed drive (VSD)

Smart (Wi-Fi Enabled) or Programmable Thermostats

- Electrically heated buildings only
- Line voltage required
- Check compatibility on manufacturer's website before purchasing





Your community.
Your co-op.
Your choice.

Variable Frequency Drives (VFD)

- Replace single speed motor/pump with VFD

Variable Refrigerant Flow (VRF) - Commercial or Multifamily Only

- Energy Efficiency Ratio (EER) of 10+
- Coefficient of Performance (COP) of 2+
- VRF must be used as primary heating and/or cooling source

New All-Electric Construction

Equipment Rebates

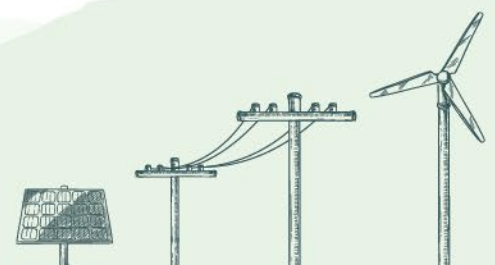
| Type of Building | Rebate Amount | Maximum Rebates |
|--|---|---------------------------|
| Residential | 25% of total cost for any qualified equipment | \$15,000 per new home |
| Commercial and Multifamily (4 or more units) | 25% of total cost for any qualified equipment | \$30,000 per new building |

Residential New Construction Qualified Equipment

- Cold climate heat pump
- Heat pump water heater
- Heat pump dryer
- Induction range/cooktop

Commercial or Multifamily (4+ Unites) New Construction Qualified Equipment

- **No gas line installed**
- Cold climate heat pump
- Heat pump water heater
- Heat pump dryer
- Induction range/cooktop
- Custom rebate may be available– contact rebates@holycross.com





Your community.
Your co-op.
Your choice.

Power Supply

Transportation & Lawn Care Rebates

E-bike

Rebate amount: \$50 per e-bike

- E-bike must be new; no rebate for resale or converting bike to e-bike
- E-bike must offset vehicle miles
- Limit of 2 e-bike rebates per household lifetime
- Custom rebate may be available for alternative electric transportation

Electric Vehicle (EV)

Residential

- Free level II ChargePoint charger
- Apply at: <https://www.holycross.com/charge-at-home/>

Commercial

- Holy Cross is partnering with local businesses to provide cost-effective workplace charging solutions
- More info at: <https://www.holycross.com/charge-at-work/>

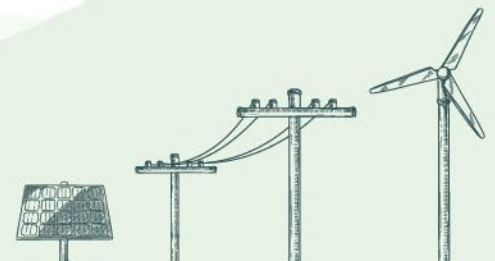
E-Lawn Care

Rebate amount: 25% of the cost of the e-lawn care product up to the maximum amount listed below

- Electric mowers (push or riding) and snow blowers -- \$150
- Electric chainsaws -- \$100
- Electric trimmers, pruners, leaf blowers and power washers -- \$50/each

Criteria:

- New equipment only
- Battery or corded electric equipment only
- Minimum purchase price of \$50
- No resales allowed
- Maximum rebate \$300 per year per member





Your community.
Your co-op.
Your choice.

Power Supply

Rebate Rules

1. Rebates are subject to change and/or discontinuation without notice. Funding is limited. Applications will be accepted on a first come, first served basis.
2. **Rebate application and associated receipts and invoices must be received no later than 90 days from date of purchase or documented completion of project.**
3. Detailed invoices and receipts for purchases and work performed must be furnished.
4. Insulation rebates are for existing residential living spaces only. Insulation rebate **excludes** garages, sheds, and workshops.
5. Commercial is defined as any property on commercial rate code and multifamily units with four (4) or more individual units per building. Exception: residential definition for employee housing built by nonprofit 501(c)(3). These entities will be treated as commercial properties.
6. Rebate checks will be distributed within 4-6 weeks of receiving the completed rebate application.
7. Rebated equipment must be installed prior to applying for a rebate. Holy Cross Energy reserves the right to inspect the installation premises.
8. Holy Cross Energy is not liable or responsible for any act or omission of any party, consumer, or contractor whatsoever.
9. Rebate capped at 25% of total project cost (material and contractor labor only – no tax, travel, mileage or permit expenses will be included in project total).
10. Consumer(s) of record must have an active electric account in good standing with Holy Cross Energy (no more than 2 delinquent payments in 12 months). Measures or equipment must be installed in a residence or business within Holy Cross's service territory.
11. Holy Cross Energy reserves the right to refuse payment and participation if the consumer or contractor violates program rules and procedures. Holy Cross Energy is not liable for rebates promised to consumers because of a contractor misrepresenting the program.
12. Equipment must meet the technical requirements listed in the application forms. Holy Cross Energy reserves the right to withhold payment for products that do not meet the requirements.
13. Rebates will be awarded based on fair and reasonable price of equipment and labor. Holy Cross reserves the right to adjust rebate based on a price that is commensurate with the extent and complexity of the services/equipment to be provided and is comparable to the price paid by entities for projects of similar scope and complexity.

The Fine Print: If Applicant makes any misrepresentation in the Application or fails to abide by each term and condition of the WE CARE rebate program in effect from time to time, then after notice by HCE to Applicant of such violation the Applicant shall forthwith pay to HCE all such rebate to HCE. If Applicant fails to pay such rebate to HCE within ten days after such notice, then Applicant shall pay in addition to such amount all HCE's cost of collection of such amount including without limitation all HCE's attorney fees. All unpaid amounts due by Applicant to HCE shall bear interest at the rate of eighteen percent per annum from the due date until paid; and such interest shall be compounded annually. HCE may at its sole election at any time offset or equitably recoup any amount due from Applicant from any amount that HCE has due or that may become due from HCE to Applicant. HCE may at its sole election add any amount due by Applicant to any electric service bill of HCE to Applicant; and HCE shall have all its rights for Applicant's failure to pay such electric service bill including without limitation termination of electric service.

