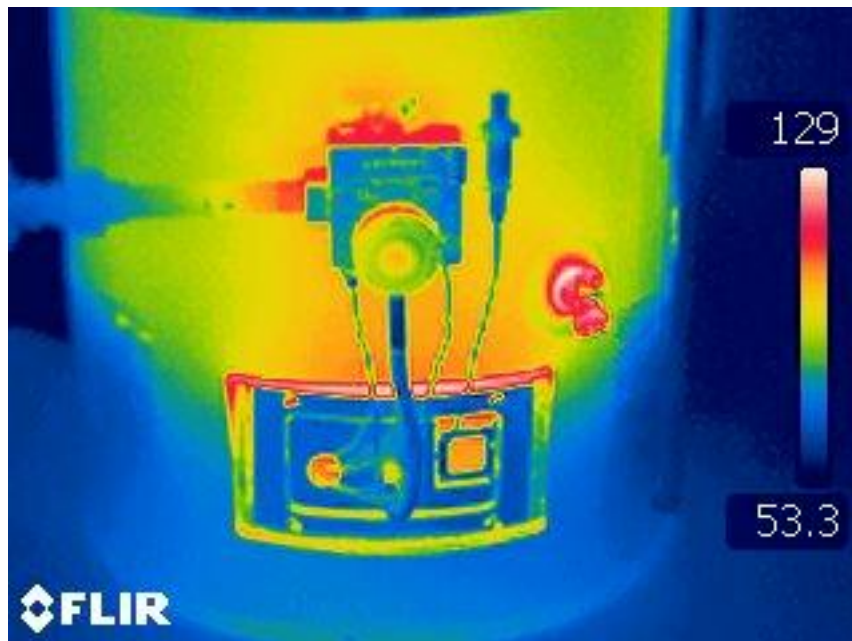




Water Heaters

Water heaters can be the second biggest source of energy usage in many households. By wrapping your water heater with an insulating blanket, you can save energy all year long. Water heater blankets come in standard sizes and can be purchased at most hardware stores. Turning down the temperature on your water heater will also reduce the energy consumption. It is recommended that the thermostat be set at 120°. Low flow shower heads are also a great way to conserve water and energy. A low flow shower head can cut the flow by nearly half without feeling a loss of pressure.



A photo from an infrared camera showing a hot water heater. Please wrap your hot water heater!