

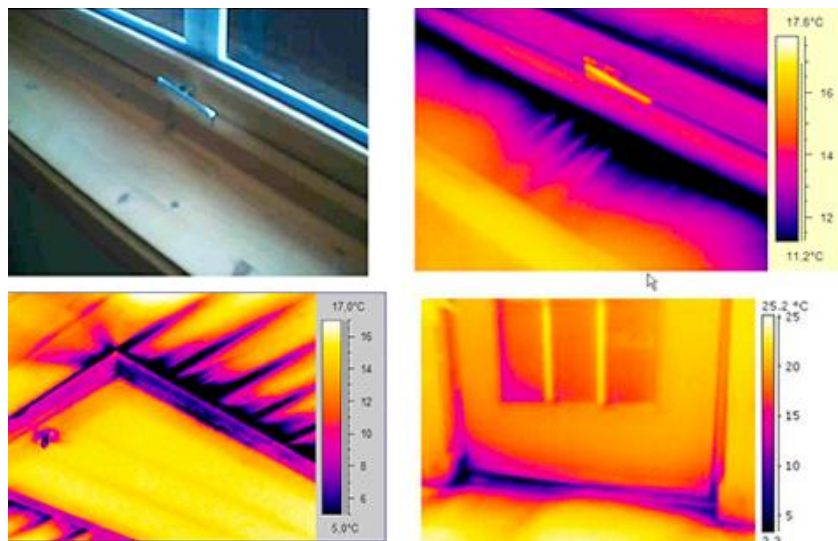


# Air Infiltration

One of the laws of thermal dynamics states that “heat flows to cold.” When warm air from your house is pulled through little gaps and holes from the interior to the outside, cold air replaces it. The most common areas to expect air finding its way into your home are from penetrations (inlet holes) have been drilled for plumbing and electrical. Silicone caulk or liquid urethane foam are the best products to seal these holes. For larger holes, foil-faced bubble-pack can be glued on with silicone and stapled in place. Don’t forget to look under your sinks.

## Sources of Air Leaks in Your Home

1. Dropped ceiling
2. Recessed lights
3. Attic entrance
4. Electrical wires and box
5. Plumbing and wiring inlets
6. Water and furnace flues
7. All ducts
8. Door sashes and frames
9. Chimney penetrations
10. Warm air register
11. Window sashes and frames
12. Baseboards, coves and trim
13. Plumbing access panel
14. Electrical outlets and switches
15. Light fixtures
16. Sill plates (between top of foundation and the first framing member)



**Images of air infiltration causing cold areas (blues & purples). The top two are of the same window. Bottom left is an attic hatch. Bottom right is a door.**